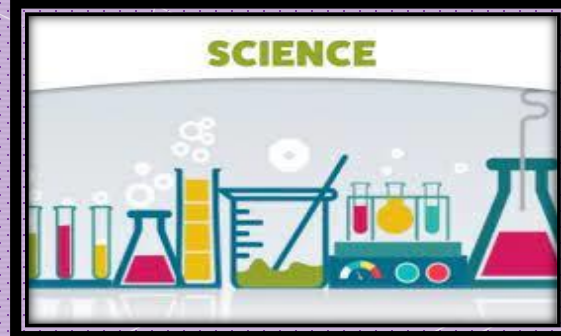
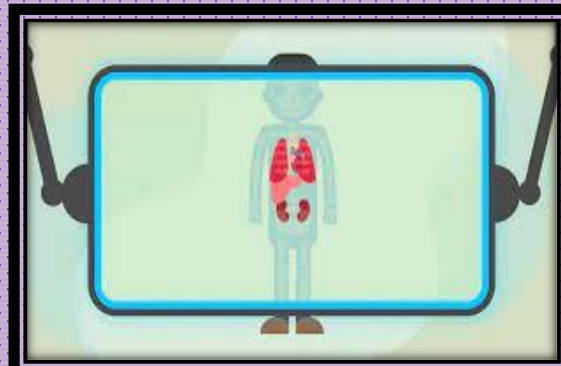


TODAY WE ARE LEARNING ABOUT VOLCANOES

SCIENCE

TODAY'S CRAFT:
VOLCANIC ERUPTION

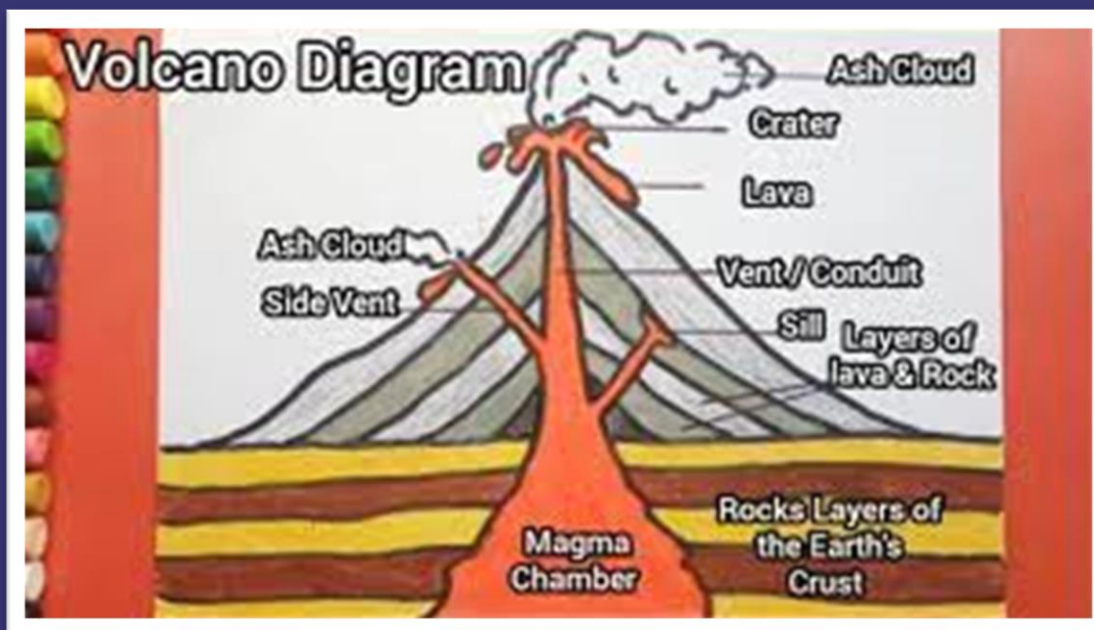
WHAT IS A VOLCANO AND WHAT DOES IT DO?



Volcanoes are formed when magma at the centre of the Earth pushes its way upwards through the Earth through a long shaft.

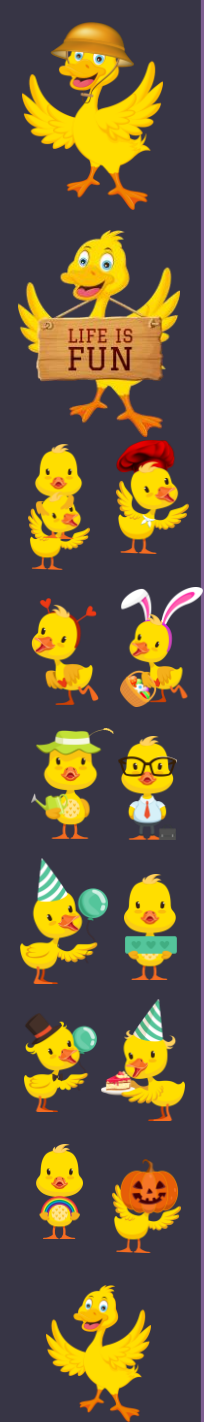
When the magma travels through the Earth's crust it emerges as lava.

Once this lava has erupted onto the Earth's surface, it cools and hardens into a pile of rock.



SCIENCE INVOLVES SO MANY DIFFERENT THINGS:

- ANIMALS
- PLANTS
- HUMAN BODY
- MATERIALS
- HABITATS AND ENVIROMENT
- FORCES
- LIGHT AND SOUND
- ELECTRICTY
- EARTH AND SPACE
- AND MUCH MUCH MORE...



VOLCANIC ERUPTION

TIME TO GET MESSY!!!

YOU WILL NEED SOME HELP FROM YOUR PARENTS/GUARDIAN

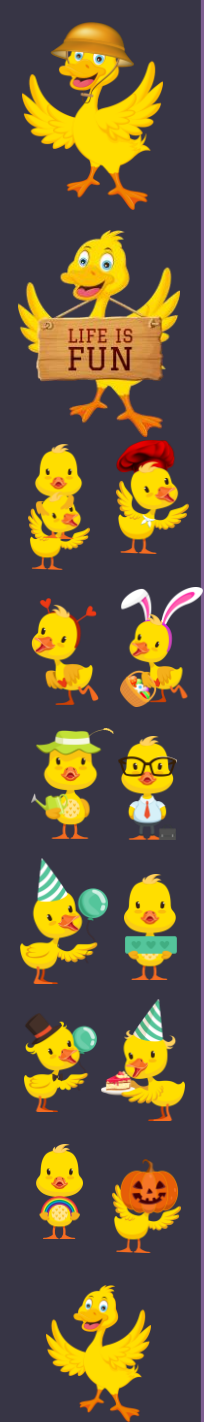
How to make an erupting volcano model

For the volcano model:

- Two A3 sheets of card
- 200 ml plastic bottle
- Pencil
- Scissors
- Tape
- Paint and paintbrushes

For the eruption:

- Small bowl
- Cup
- 1 tbsp bicarbonate of soda (baking soda)
- 1 tbsp washing up liquid
- 2 tbsp water
- $\frac{1}{2}$ cup vinegar
- 1 tbsp red food colouring



1. Place your bottle upside down in the centre of a sheet of card and draw a small circle around the neck.

2. Cut a straight line through the card to the middle of the circle, and cut it out.

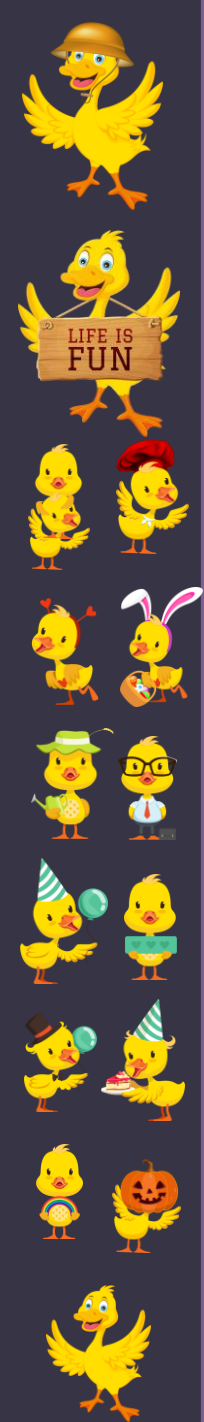
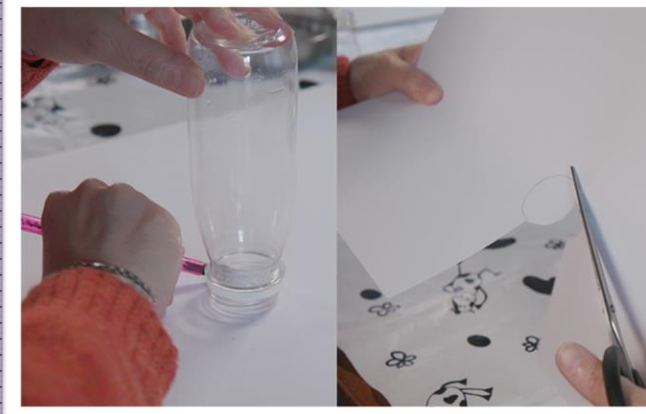
3. In the middle of the card, draw around the bottleneck and cut out the circle

4. Overlap the two sides of the card to make a cone shape. Tape this into place, leaving a hole where you cut out the circle.

5. Cut around the base of the cone so that it sits flat, but make sure that it is still taller than your bottle.

6. Place the cone over the bottle. Tape the top of the paper cone to the neck of the bottle to hold it in place. Tape the base of the cone to the other sheet of card.

7. Use paint to decorate the cone and make it look like a volcano. Allow your model to fully dry.

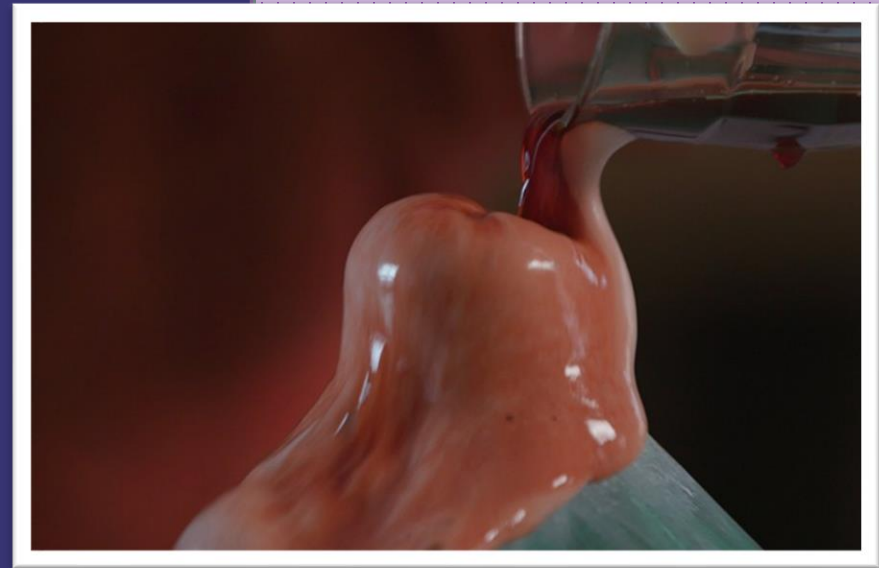


- 🐣 Cut away the card at the base of the cone so that it sits flat
- 🐣 In a bowl, combine the bicarbonate of soda and washing up liquid. Add the water and mix thoroughly. Pour this mixture into your volcano.
- 🐣 In a cup, mix together the vinegar and food colouring.
- 🐣 When you're ready, pour the vinegar into the bottle with the bicarbonate. Wait for it to erupt and watch how the lava flows.
- 🐣 Experiment with different amounts of bicarbonate and vinegar and see how the volcano's eruption changes.

Stand back and watch your volcano erupt!

Take care when handling the eruption ingredients and stand back when watching the eruption to make sure you don't get any in your eyes. Make sure you are working in a well ventilated area.

To make cleaning up easier, it's best to stand your model on a wipe-clean surface.



**WE HOPE YOU HAD FUN!
BRING IN SOME PHOTOS
FOR US TO SEE**

